

TECHNICAL SPECIFICATIONS		609g SFC CNG 3305 WB, 5.95 Ton
<b>POWERTRAIN</b>		
Engine Type		3.8 SGI BS6
Displacement/ Cubic capacity		3783cc
Maximum Power Output (in kW)		62 kW ( 85PS) @2500 r/min
Maximum Torque (in Nm)		285 Nm @ 1200-1600 r/min
Bore x Stroke (in mm )		97mm X 128mm
Clutch		Single plate dry friction type- 280 mm dia.
Transmission		G400 , 5 Speed Manual Synchromesh Gearbox (5F, 1R), PTOP
<b>FUEL SYSTEM</b>		
Fuel Injection system		Spark Ignition
Gas Cylinder Capacity		180 litres (2 x 90 Litres)
<b>ELECTRICALS</b>		
Battery		12V, 100 ah capacity
Alternator		120 amps
<b>PERFORMANCE</b>		
Max. Gradeability (1st Gear)		23.00%
<b>STEERING</b>		
Steering System		Power Steering
<b>FRAME</b>		
Frame		Ladder type frame with riveted/bolted cross members( 6 no)
Long Member Dimensions		180 x 55 x 5
<b>BRAKES</b>		
Service Brake		Vacuum assisted; Hydraulic two leading slide shoe Auto Slack Adjuster
Parking Brake		Cable operated Mechanical / Spring brake acting on all rear wheels
<b>SUSPENSION &amp; TYRES</b>		
Front Suspension		Parabolic springs and 2 no Hydraulic double acting telescopic type shock absorbers with Antiroll Bar
Rear Suspension		Semi elliptical leaf spring and 2 no Hydraulic double acting telescopic type Shock Absorber
No of tyres		Front 2,Rear 2 , Spare 1
Front		8.25 X 16 - 16 PR - RIB TYPE
Rear		8.25 X 16 - 16 PR - LUG TYPE

**WEIGHT**

Front Axle Weight -FAW (in kg)  
Rear Axle Weight -RAW (in kg)  
Kerb Weight (in kg)  
Rated Payload (in kgs)  
Gross vehicle weight (in kg)

**OVERALL DIMENSIONS**

Wheel base (in mm)  
Overall Length (in mm)  
Overall Height (in mm)  
Overall Width (in mm)

**LOAD BODY DIMENSIONS**

Load body Length (in mm )  
Load body Width (in mm )  
Load body Height (in mm )  
Minimum Turning Dia (in metres )  
Minimum Ground Clearance (in mm )  
Seating Capacity  
Warranty

**CBC**

1520  
950  
2470  
3480  
5950

**HDLB**

1600  
1390  
2990  
2960  
5950



Specifications are subject to change without prior notice. These are indicative photos, specifications for reference only.



Dealer Stamp

For more information, please visit our website: [www.light-trucks.tatamotors.com](http://www.light-trucks.tatamotors.com)  
You can also contact our Sales Office: Tata Motors Limited, 4th Floor, Ahura Centre, 82, Mahakali Caves Road, MIDC, Andheri (East), Mumbai - 400 093 or call toll-free no. 1800 209 7979.

*Terms & Conditions apply as per the policy of ITGI. Insurance available on light, intermediate & heavy commercial vehicles.*  
CAUTION: Accessories shown in the picture or elsewhere do not constitute standard fitment. The specifications are merely indicative. Due to continuous product improvements, these specifications are liable to change without notice.

3-YEAR/3-LAKH KM WARRANTY

TATA NEW GENERATION TELEMATICS

TATA DELIGHT

TATA ZIPPY

TATA OK

TATA MOTORS

SAMPOORNA SEVA

AAPKE SAATH HAR KADAM

TOLL-FREE 1800 209 7979

TATA GENUINE PARTS

TATA SURAKSHA

TATA PROLIFE

TATA KAVACH

TATA ALERT



FUEL EFFICIENT  
ENGINE



H2LS  
Brakes



LARGER  
LOADING AREA



3-YEAR/3 LAKH KM\*  
WARRANTY



IN-BUILT  
MUSIC SYSTEM



MOBILE  
CHARGING SOCKET



HEAT-RESISTANT  
FEATURES

**TATA MOTORS**  
Connecting Aspirations



**Non Stop performance Machine to deliver More profits**

**609g SFC CNG**

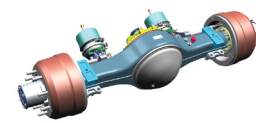
Your environment-friendly partner



SFC 407 CNG BS4 is now **609g SFC BS6**



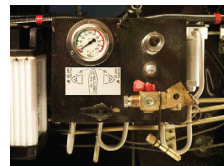
## IMPROVED PRODUCT PACKAGE



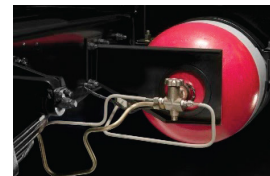
Banjo Type Rear Axle More Load carrying capacity, lesser prone to leakage



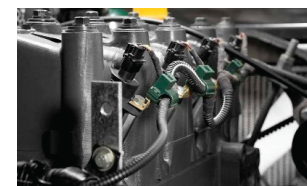
Long member thickness is increased to 5mm



User friendly duel nozzles: fast filling and Slow filling



High Quality precision materials used for highest safety & efficiency-CNG Cylinder valve with inbuilt pressure relief devices



Coil-on -plug: Low maintenance & efficient electrical system High uptime with easy fault diagnosis system



SAFETY ENHANCED with more solid built quality on SFC Cabin



New 120 Aalternator



Serrated Coupling flange propeller shaft for better Reliability, Maintenance & to increase Power Transmission



Music system & Blaupunkt speakers + USB fast charging

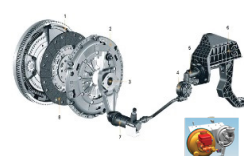


New Instrument Cluster with Tell tale Symbols and Gear shift advisor

## IMPROVED DRIVERS' PACKAGE



H2LS Brakes with Brake Boosters



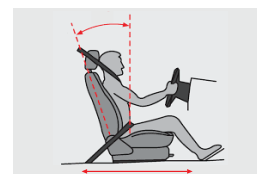
Reduced clutch effort by 40%



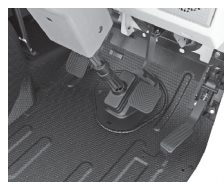
Lower Gear Shift Effort with optimized Gear Shift travel



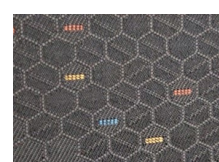
Power steering with reduced effort and new steering wheel



Seat adjustment in XZ Direction



ABC Pedals Improved Ergonomic pedal positions to reduce fatigue



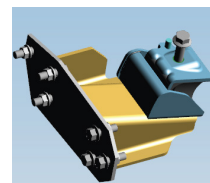
Melba Fabric for Seats for better comfort both in summer and winter



Improved New Combination switch with better reliability



Lower NVH with improved engine mount and Parabolic suspension with rubber Bush



## EXPERIENCE THE TATA MOTORS ILCV 6 POWER OF 6 EXPERIENCE THE POWER OF CHANGE

BS6  
THE POWER OF 6



POWER OF GREATER PROFITS



POWER OF ENHANCED PERFORMANCE



POWER OF INCREASED DRIVING COMFORT



POWER OF GREATER CONVENIENCE & CONNECTIVITY



POWER OF GREATER VALUE



POWER OF IMPROVED SAFETY AND SECURITY

In Line with the 'Clean Fuel Corridor' being created by the government across India starting from the northern belt, Tata Motors proudly presents its new 'Green Range' of BS6 CNG Trucks.

The Legend of trucking the prestigious SFC 407 Ex CNG returns in an all new avatar as The TATA 609g SFC CNG Taking pride as the truck with "The Best value for money LCV Truck", the 609g SFC has much to offer with it's Improved product and driver packages, enhanced connectivity and Gradeability, lower cost of ownership, thus making it the most desired CNG LCV in India.

In addition, Tata Motors is the ONLY manufacturer in India selling the SFC Styled Cabins with the 'Unique NOSE' for highest levels of safety.

This truck has won the hearts of the Owners and Drivers alike and if you're looking out for a 6 Ton CNG Cargo Truck with a 10 Ft Deck length, this truck is yours to own.



Largest loading area with highest width- 3071 mm (10.07 Ft.) X 1965 mm (6.44 Ft.)



Lowest TCD



23%

Optimum Gradeability of 23%



Improved G400 gearbox with PTO Provision

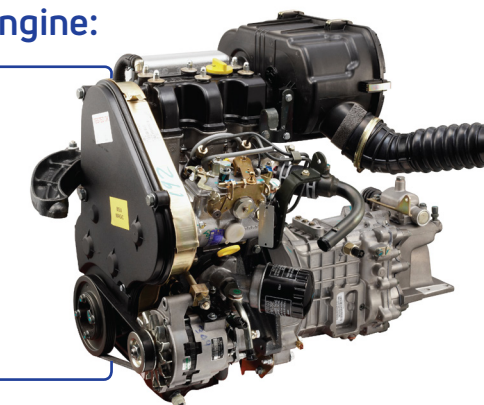
## Trustworthy & Fuel Efficient 3.8 SGI BS6 CNG Engine:

- The DNA of BS4 Engine is carried to the BS6 Engine so that the same reliability and Mileage Superiority is achieved

Max Power at 62 kW ( 85PS)

- Max Torque improved to 285 Nm (6% more)
- Low End torque Increased to 250 Nm (8 % increase)

- BS6 compliant



## TRIED, TESTED & TRUSTED

- Advanced Sequential Gas Injection (SGI) technology Multi-port fuel injection system
- Heavy duty aggregates
- High horsepower and torque
- Most cost efficient in its class
- Lowest spare parts cost
- Largest customer base
- Highest resale value

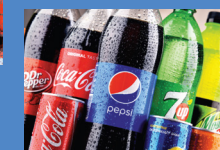
## ALL-SEASON MANY APPLICATIONS



Fruits & Vegetables



Gas Cylinders



Cold Drinks



Milk Cans



FMCG



Grains



Dairy Products



White Goods



E-commerce

\*Images used are representative purpose only  
\*Technical specs are subjected to be changed & are applicable under standard test conditions

\*Images used are representative purpose only  
\*Technical specs are subjected to be changed & are applicable under standard test conditions